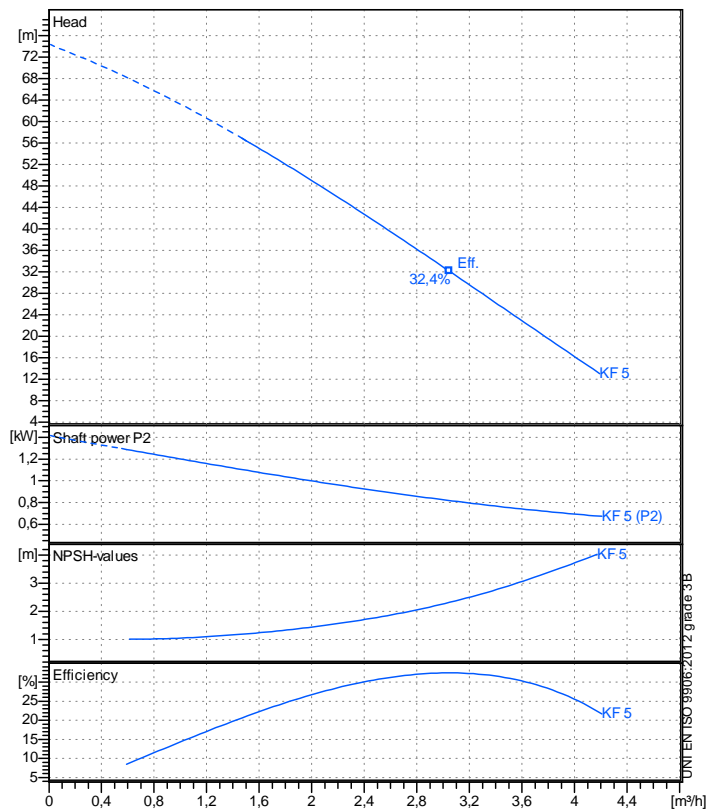


Receiver

From

Company name
Respons. Department
Person in charge
Phone number
Fax no
E-mail address



Operating data specification

Nominal flow	m³/h 0
Nominal head	m 0
Static head	m 0
NPSH - v value of plant	m 0
Inlet pressure	bar 0,09793
Fluid	Water, pure
Operating temperature t A	°C 20
Density at t A	kg/m³ 998,3
Kin. viscosity at t A	mm²/s 1,005

Pump

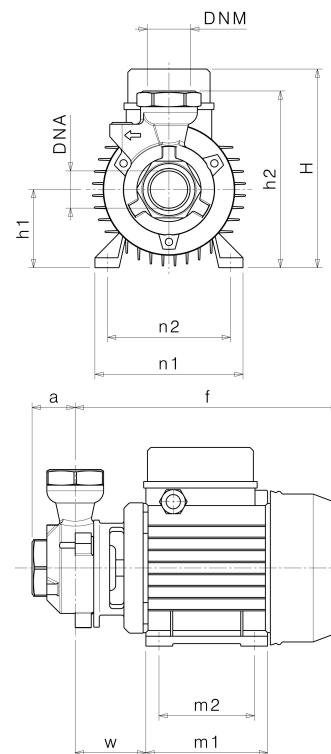
Pump name	KF 5		
Size			
Design			
Speed rpm	2850	No of stages	1
Impeller type	Peripheral impeller		
Flow	Nominal	m³/h	
	Max-	m³/h	4,19
	Min-	m³/h	1,5
Head	Nominal	m	
	Max-	m	56,4
	Min-	m	13
Head H(Q=0)		m	74,4
NPSH 3%		m	
Max. working pressure		bar	7,28
Shaft power		kW	
Efficiency		%	
Max absorbed power		kW	1,2882

Materials Pump

Shaf t	Stainless steel AISI 420 (1.4028)		
Impeller	Brass		
Pump body	Cast iron EN-GJL-200		
Support	Cast iron EN-GJL-200		
OR	NBR Rubber		
Mechanical seal	BXPB (Gra/Cer/NBR)		

Dimensions in mm

a	45
DNA	G 1"
DNM	G 1"
f	274
H	200
h1	80
h2	175
m1	124
m2	100
n1	152
n2	125
od	9
w	69



Remarks:

Project	Project ID	Created by	Created on	Last update
			2019-02-13	