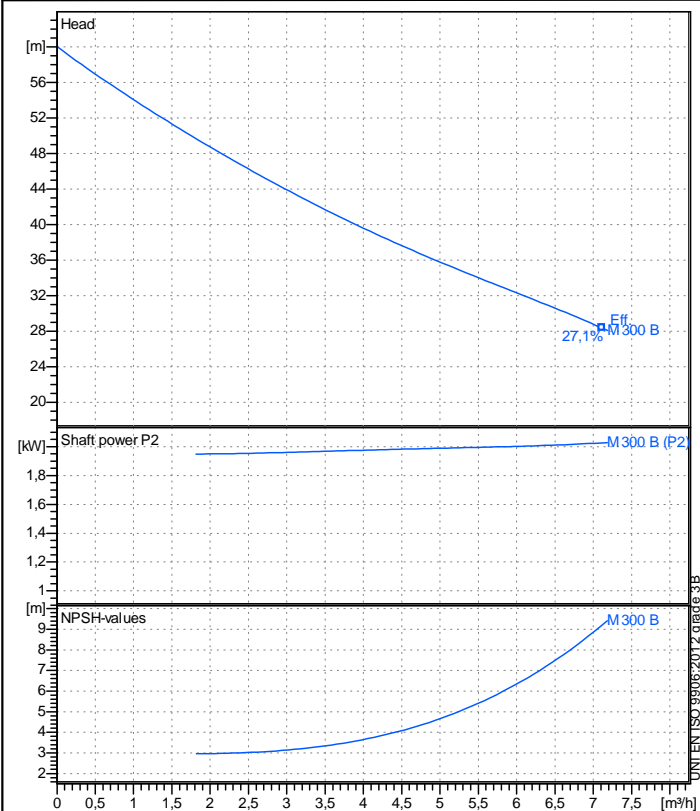


Receiver

From

Company name
Respons. Department
Person in charge
Phone number
Fax no
E-mail address



Operating data specification

Nominal flow	m³/h	0
Nominal head	m	0
Static head	m	0
NPSH - v value of plant	m	0
Inlet pressure	bar	0,09793
Fluid	Water, pure	
Operating temperature t A	°C	20
Density at t A	kg/m³	998,3
Kin. viscosity at t A	mm²/s	1,005

Pump

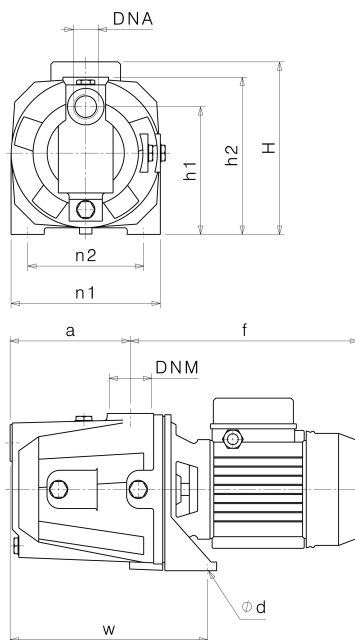
Pump name	M 300 B		
Size			
Design			
Speed rpm	2850	No of stages	1
Impeller type			
Flow	Nominal	m³/h	
	Max-	m³/h	7,19
	Min-	m³/h	0
Head	Nominal	m	
	Max-	m	60
	Min-	m	28,1
Head H(Q=0)	m	60	
NPSH 3%	m		
Max. working pressure	bar	5,88	
Shaft power	kW		
Efficiency	%		
Max absorbed power	kW	2,0285	

Materials Pump

Pump body	Cast iron G20		
Plug	Brass		
Gasket	Aluminium		
Nut	Brass		
Impeller	Brass		
Rotating mechanical seal	Graphite		
Fixed mechanical seal	Ceramic		
OR	Rubber NBR		
Seal retaining disc	Stainless steel AISI 304		
Motor	Frame size	90 S	
Manufacturer / Type	SAER 90 S 2 - 1,5 3~		
Rated power kW	1,5	Efficiency 4/4	0 %
Electric current A	11 A	Speed rpm	2950
Electric voltage V	400 V	3~	Hz 50
Starting mode	Unknown		
Degree of protection	IP 44	Insulation class	F

Dimensions in mm

a	160,5
b	168,5
DNA	G 1 1/2"
DNM	G 1 1/4"
f	246,5
H	235
h1	120
h2	233
n1	180
n2	228
od	11
w	180



Remarks:

Project	Project ID	Created by	Created on	Last update
			2019-02-13	