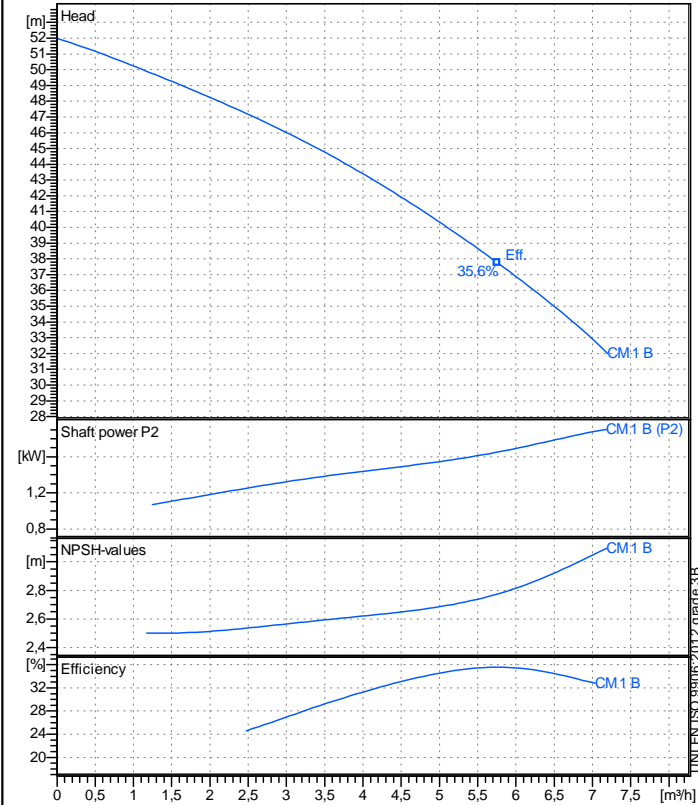


Receiver

From

Company name
Respons. Department
Person in charge
Phone number
Fax no
E-mail address



Operating data specification

Nominal flow	m³/h 0
Nominal head	m 0
Static head	m 0
NPSH - v value of plant	m 0
Inlet pressure	bar 0,09793
Fluid	Water, pure
Operating temperature t A	°C 20
Density at t A	kg/m³ 998,3
Kin. viscosity at t A	mm²/s 1,005

Pump

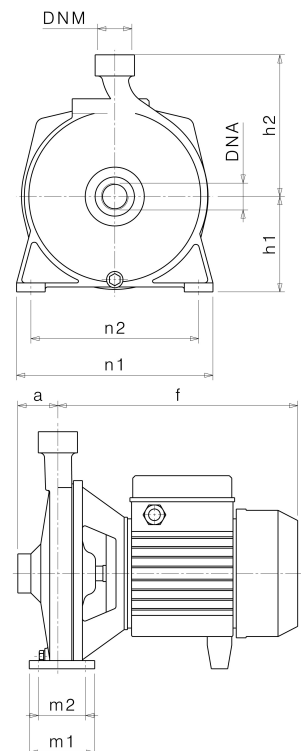
Pump name	CM 1B		
Size			
Design			
Speed rpm	2850	No of stages	1
Impeller type	Single vane impeller		
Flow	Nominal	m³/h	
	Max-	m³/h	7,2
	Min-	m³/h	0
Head	Nominal	m	
	Max-	m	52
	Min-	m	32
Head H(Q=0)	m 52		
NPSH 3%	m		
Max. working pressure	bar 5,09		
Shaft power	kW		
Efficiency	%		
Max absorbed power	kW 1,9019		

Materials Pump

Shaft	Stainless steel AISI 420 (1.4028)			
Impeller	Brass			
Pump body	Cast iron EN-GJL-200			
Support	Cast iron EN-GJL-200			
OR	NBR Rubber			
Mechanical seal	BXPG (Gra/Cer/NBR)			

Dimensions in mm

a	49
DNA	G 1"
DNM	G 1"
f	293
h1	116
h2	174
m1	80
m2	58
n1	240
n2	205
od	11



Remarks:

Project	Project ID	Created by	Created on 2019-02-13	Last update
---------	------------	------------	--------------------------	-------------