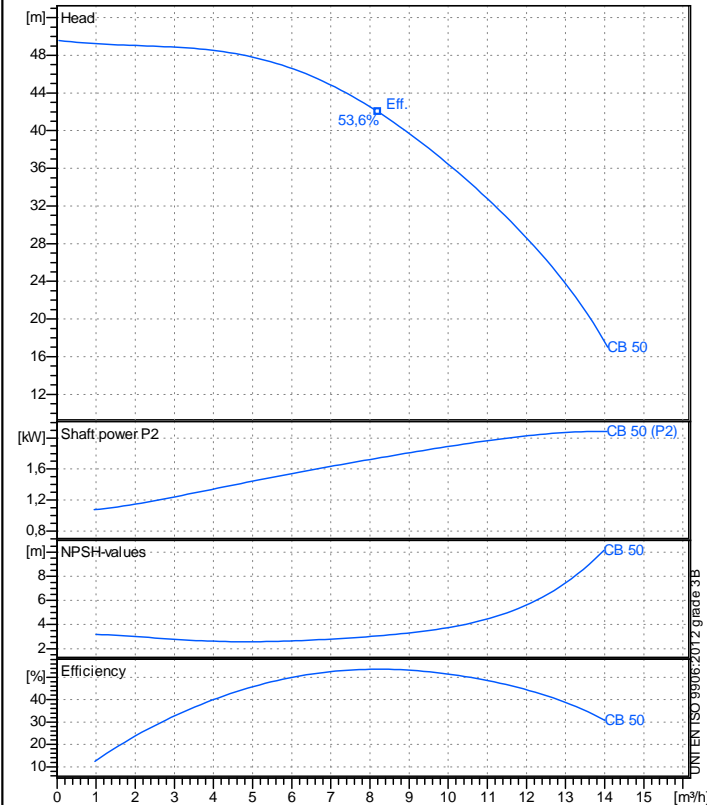


Receiver

From

Company name
Respons. Department
Person in charge
Phone number
Fax no
E-mail address



Operating data specification

Nominal flow	m³/h 0
Nominal head	m 0
Static head	m 0
NPSH - v value of plant	m 0
Inlet pressure	bar 0,09793
Fluid	Water, pure
Operating temperature t A	°C 20
Density at t A	kg/m³ 998,3
Kin. viscosity at t A	mm²/s 1,005

Pump

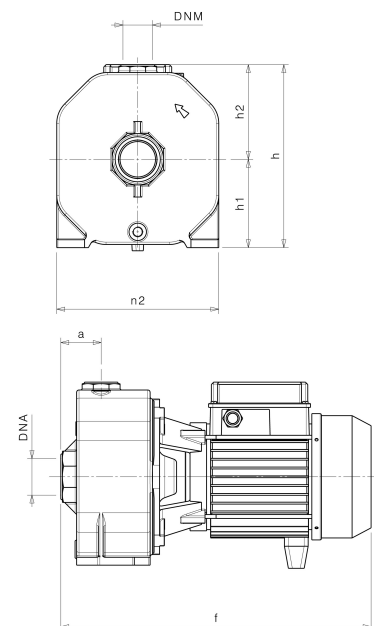
Pump name	CB 50		
Size			
Design			
Speed rpm	2900	No of stages	1
Impeller type			
Flow	Nominal	m³/h	
	Max-	m³/h	14,1
	Min-	m³/h	0,0526
Head	Nominal	m	
	Max-	m	49,6
	Min-	m	17
Head H(Q=0)		m	49,6
NPSH 3%		m	
Max. working pressure		bar	4,86
Shaft power		kW	
Efficiency		%	
Max absorbed power		kW	2,0838

Materials Pump

Shaft	Stainless steel AISI 420 (1.4028)			
Impeller	Brass			
Pump body	Cast iron EN-GJL-200			
Support	Cast iron EN-GJL-200			
OR	NBR Rubber			
Mechanical seal	BXPG (Gra/Cer/NBR)			
Diffuser	Thermoplastic resin			

Dimensions in mm

a	51
DNA	G 1 1/2"
DNM	G 1"
f	393
h	232
h1	112
h2	120
n2	205



Remarks:

Project	Project ID	Created by	Created on 2019-02-13	Last update
---------	------------	------------	--------------------------	-------------