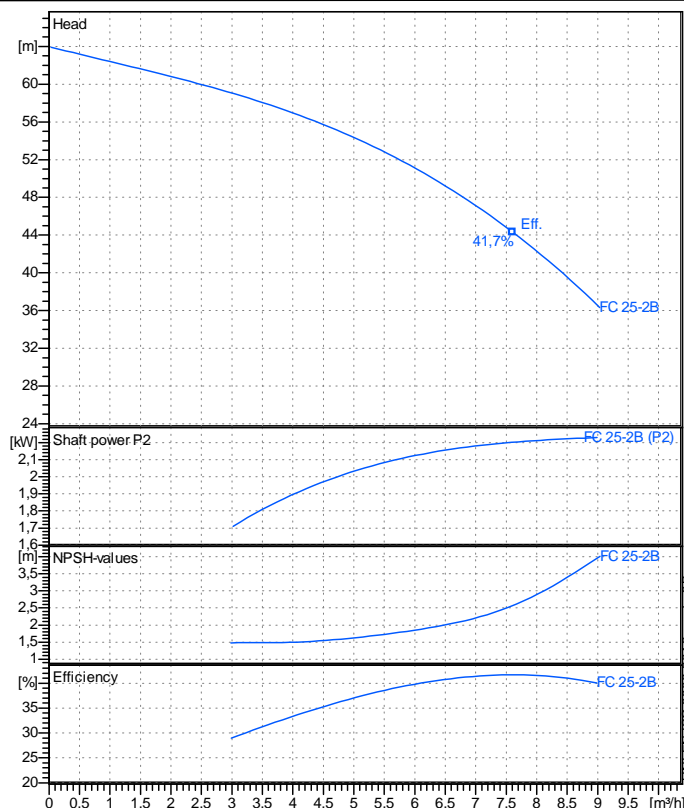


Receiver

From

Company name
Respons. Department
Person in charge
Phone number
Fax no
E-mail address



Operating data specification

Nominal flow	m³/h	0
Nominal head	m	0
Static head	m	0
NPSH - v value of plant	m	0
Inlet pressure	bar	0,09793
Fluid	Water, pure	
Operating temperature t A	°C	20
Density at t A	kg/m³	998,3
Kin. viscosity at t A	mm²/s	1,005

Pump

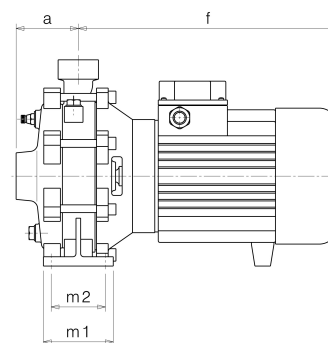
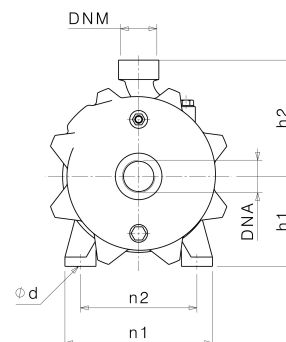
Pump name	FC 25-2B		
Size			
Design			
Speed	rpm	2850	No of stages 2
Impeller type			
Flow	Nominal	m³/h	
	Max-	m³/h	9,04
	Min-	m³/h	0,0351
Head	Nominal	m	
	Max-	m	63,9
	Min-	m	36,3
Head H(Q=0)	m	64	
NPSH 3%	m		
Max. working pressure	bar	6,27	
Shaft power	kW		
Efficiency	%		
Max absorbed power	kW	2,2293	

Materials Pump

Shaf t	Stainless steel AISI 431 (1.4057)		
Impeller	Brass		
Pump body	Cast iron EN-GJL-200		
Support	Aluminium		
OR	NBR Rubber		
Mechanical seal	BXPB (Gra/Cer/NBR)		

Dimensions in mm

a 80
DNA G 1 1/4"
DNM G 1"
f 313
h1 115
h2 150
m1 90
m2 70
n1 190
n2 150
od 12



Remarks:

Project	Project ID	Created by	Created on 2019-02-13	Last update
---------	------------	------------	--------------------------	-------------